

Map is presented by



April 3-7, 2019 in San Felipe, Baja California, Mexico

One Loop, Approx. 349.91 Miles

# SCORE SAN FELIPE 250

"33rd" MONSTER ENERGY

### Speed Zones

1. Starts @ Rm .12 and ends @ Rm .62 (20 mph limit).
2. Starts @ Rm 138.10 and ends @ Rm 170.30 (60 mph limit).
3. Starts @ Rm 319.48 and ends @ Rm 320.13 (37 mph limit).
4. Starts @ Rm 349.49 and ends at finish line (20 mph limit).

### Zonas de velocidad

1. Comienza @ Rm .12 y termina @ Rm .62 (20 mph limit).
2. Comienza en @ Rm 138.10 y termina en @ Rm 170.30 (60 mph limit).
3. Inicia @ Rm 319.48 y termina @ Rm 320.13 (37 mph limit).
4. Comienza en @ Rm 349.49 y termina en la línea de meta. (20 mph limit).

Pre-Running opens, March 23, 2019

### IMPORTANT "PRERUNNING" NOTICE

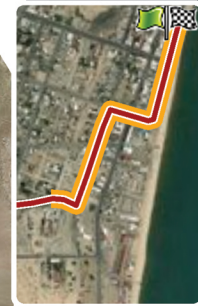
Prerunning is an opportunity to view the course at a safe moderate speed. One mile prior to any town/hwy crossing maximum speed should be 30mph. REMEMBER: Prerunning is NOT racing; civilian traffic is possible at any time.

Pre Recorrido se abre Marzo 23, 2019

### Aviso importante "pre-recorrido"

Pre-recorrido es la oportunidad para conocer el curso de este a una velocidad segura y moderada. Una milla antes de cualquier poblado, ciudad y cruces en carreteras la velocidad máxima sera de 30mph. Recuerde pre-recorrido no es un carrera, trafico civil es posible en cualquier momento.

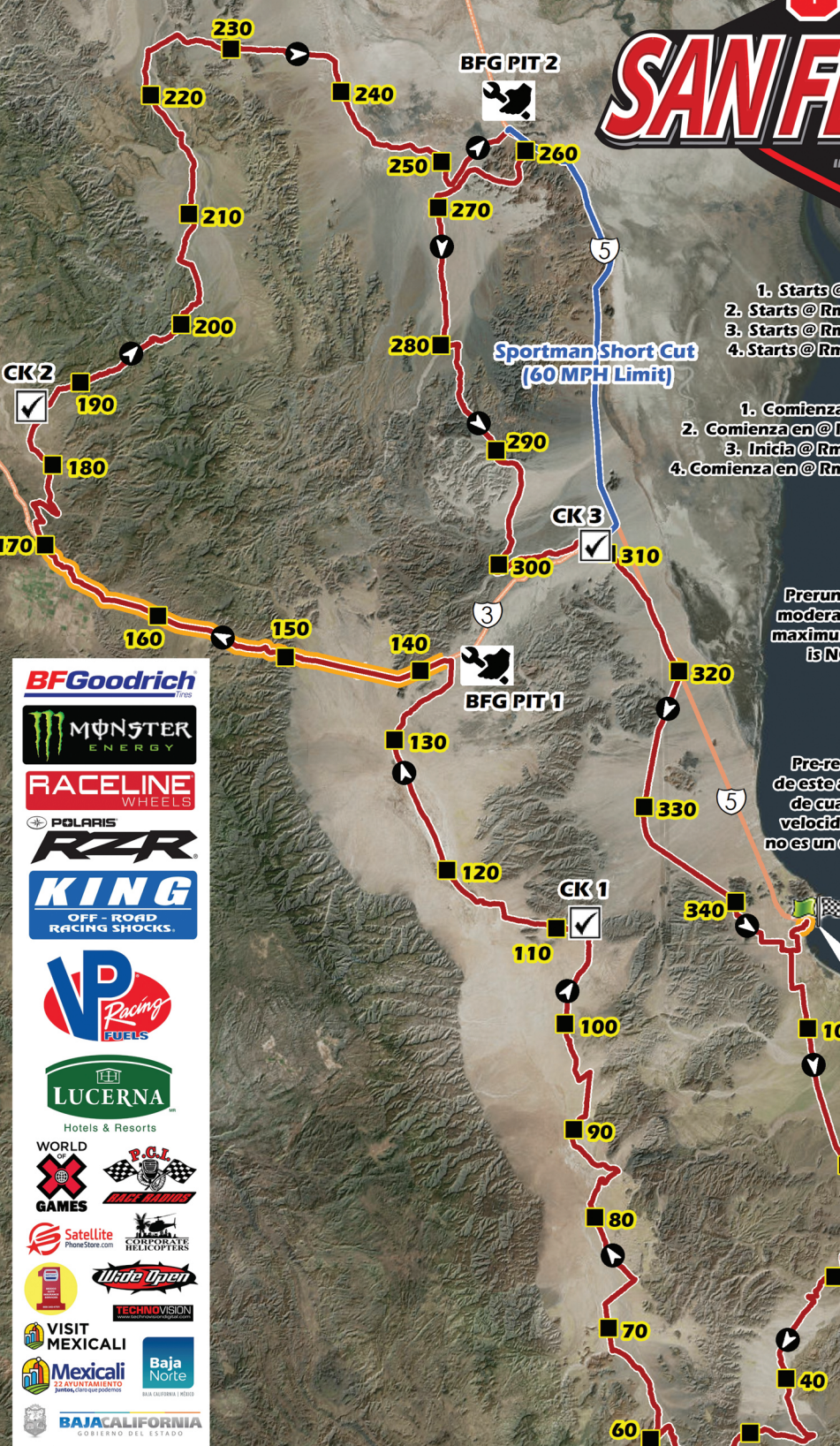
Start and Finish in San Felipe



### Legend

- ✓ Check Point
- ⤴ Course Direction
- Race Mile
- 🚩 Start and Finish
- ~ Course
- ▭ Speed Zone Area

0 5 10 Miles



**BFGoodrich** Tires

**MONSTER ENERGY**

**RACELINE** WHEELS

**POLARIS**

**RZR**

**KING** OFF-ROAD RACING SHOCKS.

**VP** RACING FUELS

**LUCERNA** Hotels & Resorts

**WORLD GAMES**

**P.C.I. RACE SERVICES**

**Satellite Phone Store**

**Wide Open** CONCRETE HELICOPTERS

**TECHNOVISION**

**VISIT MEXICALI**

**Mexicali** 22 años de turismo para quien quiere disfrutar

**Baja Norte** BAJA CALIFORNIA GOBIERNO DEL ESTADO

